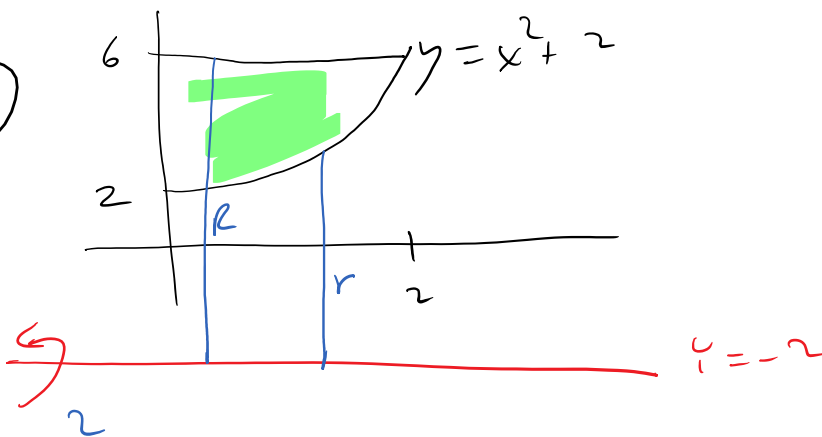
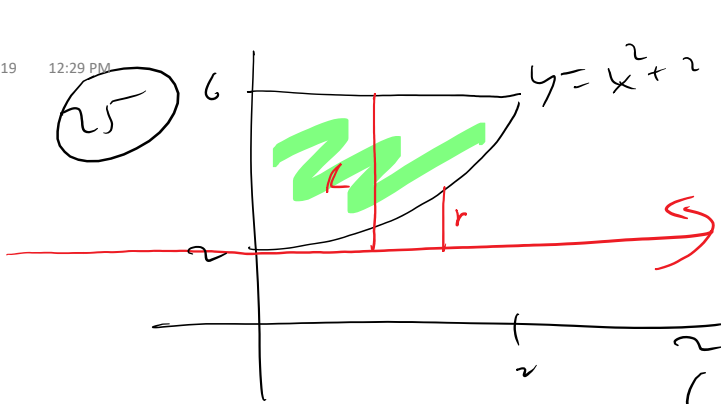


24



$$R = 8$$
$$r = x^2 + 4$$

$$\pi \int_0^2 (8^2 - (x^2 + 4)^2) dx$$

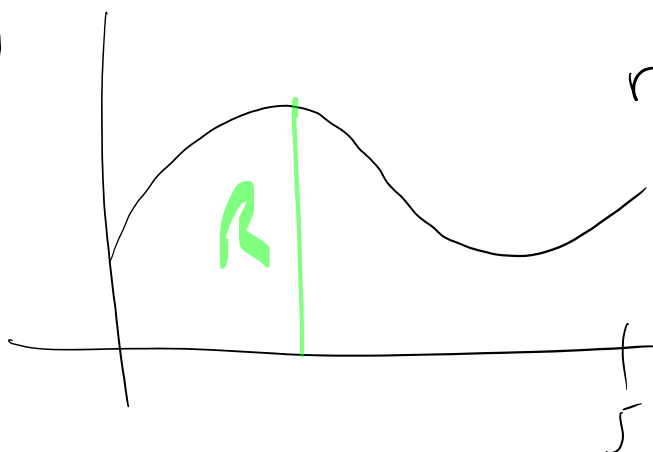


$$R = 4$$

$$r = x^2 + 2 - 2 = x^2$$

$$\pi \int_0^2 (4 - (x^2)^2) dx$$

79



$$\pi \int_0^5 (2 + 5 \sin x)^2 dx$$

Wednesday, April 3, 2019 12:34 PM

A handwritten signature or set of initials enclosed within a hand-drawn circle.A single, stylized handwritten letter 'B'.